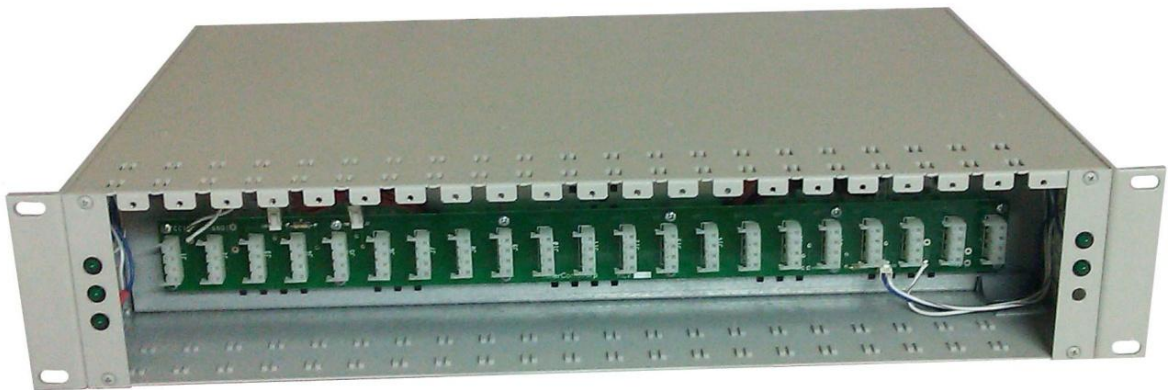
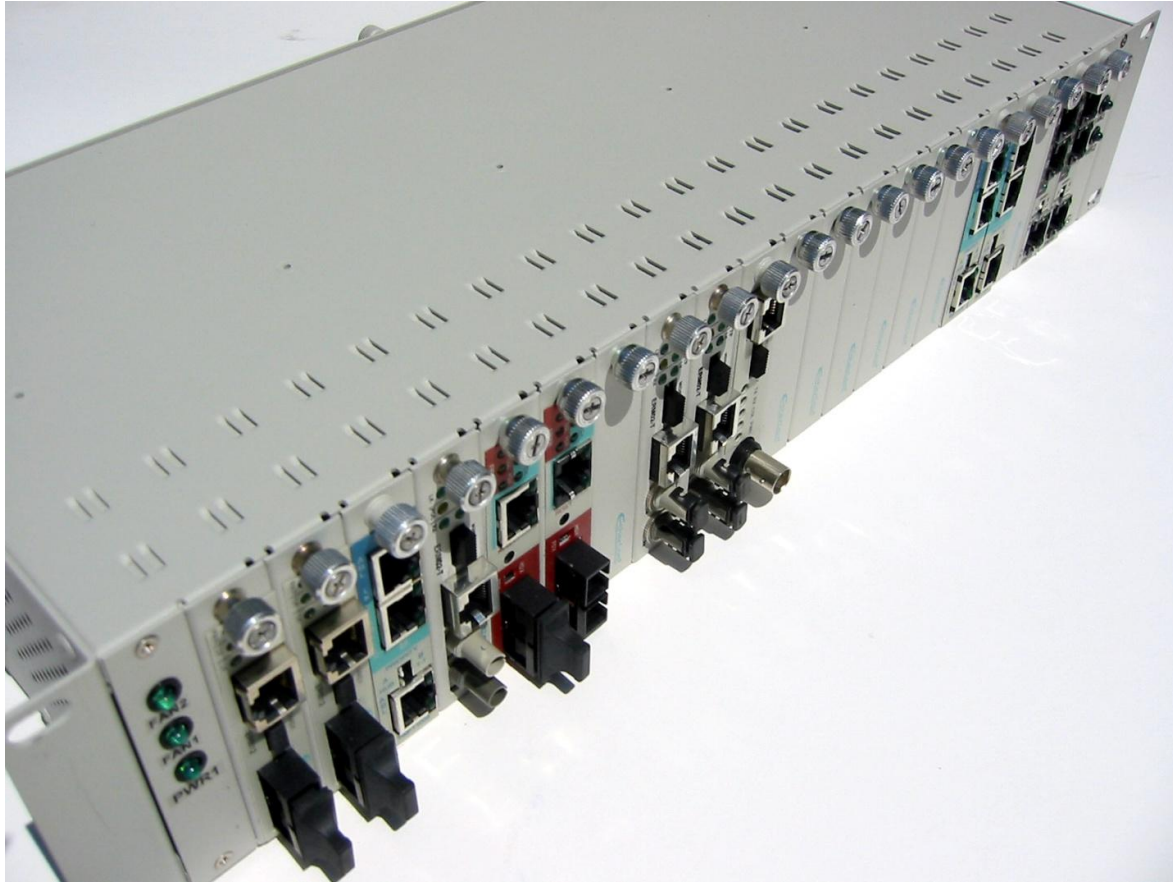




"The Connectivity Connection"

1409 Fulton Place, Fremont, CA 94539, USA

## ERM21C Rack Mount 21 Slot Chassis



## Overview

ERM21C is a 21 slot chassis, which can house up to 21 cards of the ERM series of EtherCom products.

## Features & Benefits

- Up to 21 converters in a two unit high (3.5 inches) 19" rack-mount chassis.
- Hot swappable modules.
- Optional redundant power supply.
- Rugged steel enclosure.
- Designed & manufactured in the USA.
- The built in auto sensing power supply can be augmented with a second redundant power supply for added protection.
- The chassis allows you to mix up to twenty-one ERM series hot swappable modules.

## ERM21C Technical Specifications

> Network Standards	Ethernet IEEE 802.3u
> Power Requirements	<b>Input Voltage:</b> 90 - 250 VAC, internal power supply.
> LEDs	<b>ERM21C:</b> 2 for power, 3 for fans
> Weight	<b>ERM21C:</b> 9.3 lbs. <b>ERM-CP:</b> 1.2 lbs.
> Dimensions	17" x 12" x 4.5"
> Environmental	<b>Operating Temperature:</b> 14 to 131F (-10 to 55 C) <b>Storage Temperature:</b> -4 to 140F (-20 to 60 C) <b>Relative Humidity:</b> 5% to 90% (non-condensing)
> Connectors	IEC power connector
> EMI & Safety	FCC Class A, <b>CE</b>
> Warranty	5 years

## Ordering Information

ERM21C	21 Slot Chassis
ERM-21PS	Optional redundant power supply
ERM-CP	Blank cover plate for unused slots

Ordering Hotline & Technical Support - **TEL: (510) 440 - 0242** , [info@ethercom.com](mailto:info@ethercom.com)



"The Connectivity Connection"

1409 Fulton Place, Fremont, CA 94539, USA